

BASE SLAB REINFORCEMENT:  
#4@6" E.W. TOP

**WALL REINFORCEMENT:**

DEPTH BELOW TOP OF GRATE  
0 TO 10'-0"  
10'-1" TO 15'-0"  
15'-1" TO 20'-0"

HORZ. REINF.  
#4@10"  
#4@8"  
#4@6"

VERT. REINF.  
#4@18"  
#4@18"  
#4@18"

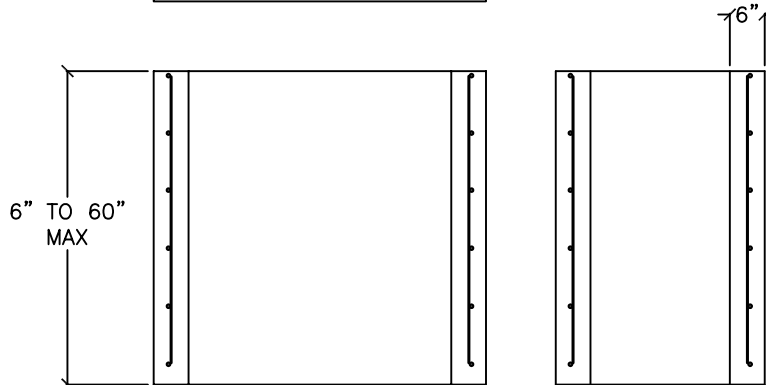
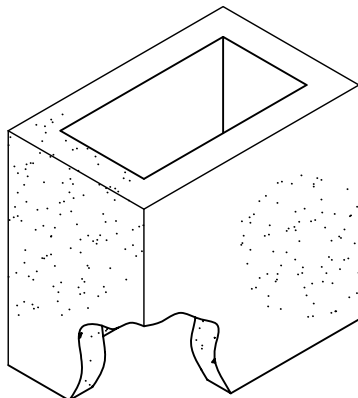
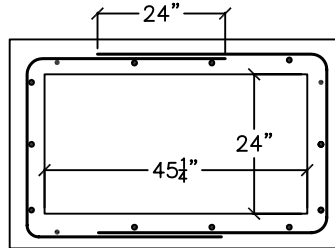
**ALTERNATE WALL REINFORCEMENT:**

DEPTH BELOW TOP OF GRATE  
0 TO 10'-0"  
10'-1" TO 15'-0"  
15'-1" TO 20'-0"

REINF.  
WWF3x6 W6/W6  
WWF3x6 W6/W6  
WWF3x6 W6/W6

ADDITIONAL HORZ. REINF.  
#3@18"  
#3@15"

WIRES SPACED AT 3" TO RUN HORIZONTAL.



**SPECIFICATIONS**

MATERIAL AND CONSTRUCTION SHALL COMPLY WITH NJ D.O.T.  
NJ DOT CLASS B CONCRETE 4500 P.S.I. @ 28 DAYS  
REINFORCEMENT~ A.S.T.M. A615 GRADE 60, MIN. 1 1/2" COVER.  
WELDED WIRE FABRIC SHALL CONFORM TO ASTM A185.  
LOCATION OF PIPE OPENING AS REQUIRED.

**Continental Concrete Products, Inc.**  
1 South Grosstown Rd.  
Pottstown, PA 19464  
Phone: (610) 327-3700  
Fax: (610) 327-9488

**24"x45 1/4" INLET BOX w/RISER**

SIGNATURE OF APPROVAL

DATE

RRP

DWG

3/07

**NJ2448**

STRUCTURE

INLET