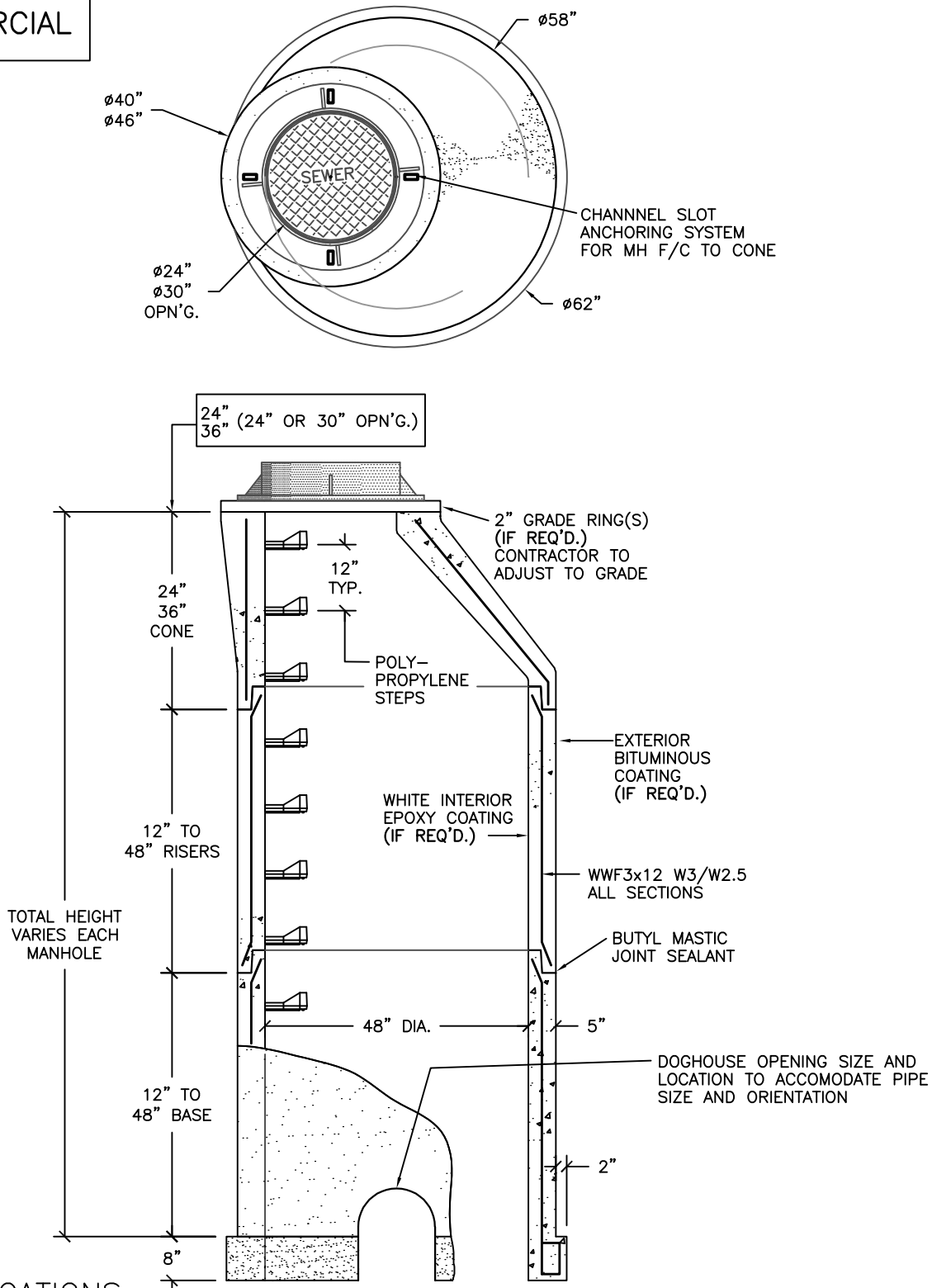
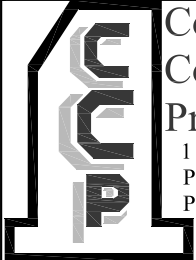


COMMERCIAL



**SPECIFICATIONS:**

- MINIMUM CONCRETE STRENGTH 4000 PSI @ 28 DAYS (PENN DOT CLASS AA)
- STEEL REINFORCEMENT ASTM A185 HORIZONTAL & HORIZONTAL STEEL
- 1 1/2" MIN. CONCRETE COVER (ALL REINFORCEMENT)
- MANHOLE DESIGN SPEC. CONFORM TO "PRECAST REINFORCEMENT MANHOLE SECTIONS" ASTM C478, LATEST REVISION.



**Continental  
Concrete  
Products, Inc.**  
1 South Grosstown Rd.  
Pottstown, PA 19464  
Phone: (610) 327-3700  
Fax: (610) 327-9488

**BOTTOMLESS 48" DIA. SANITARY  
DOGHOUSE MANHOLE-2" EXT.**

SIGNATURE OF APPROVAL

DATE

RRP

DWG

STRUCTURE

4/06

BLDOGHSEMh2X