

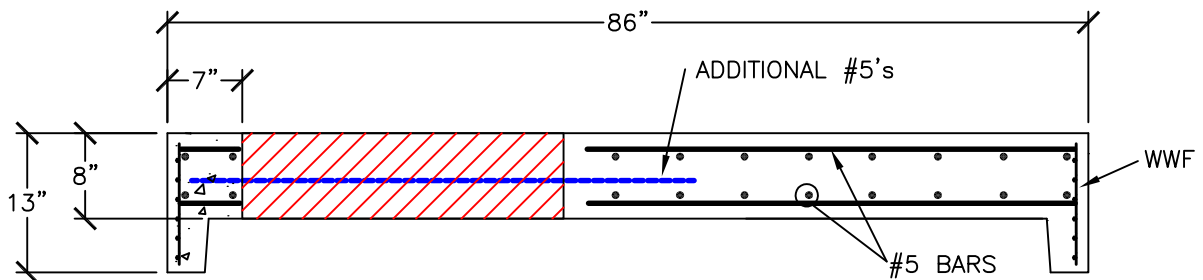
ADDITIONAL #5 BAR  
AROUND ACCESS  
OPENING

(4) CHANNEL  
SLOTS CAST IN  
AT 90° BY  
HALFEN  
ANCHORING  
SYSTEMS

WWF3x12 W3/W2.5  
CIRCUMFERENTIAL

#5@6" E.W.  
TOP & BOTT.

24" OR 30"  
OPENING



### SECTION

#### SPECIFICATIONS:

MINIMUM CONCRETE STRENGTH 4000 PSI @ 28 DAYS (PENN DOT CLASS AA)  
 STEEL REINFORCEMENT ASTM A185 HORIZONTAL TOP SLAB STEEL 1 1/2" MIN. CONCRETE COVER  
 MANHOLE DESIGN SPEC. CONFORM TO "PRECAST REINFORCEMENT MANHOLE SECTIONS" ASTM C478, LATEST REVISION.  
 72" DIA. MANHOLE FLAT LIDS DESIGNED WITH STANDARD AASHTO HS-25 LIVE LOAD CONDITIONS



**Continental  
Concrete  
Products, Inc.**  
 1 South Grosstown Rd.  
 Pottstown, PA 19464  
 Phone: (610) 327-3700  
 Fax: (610) 327-9488

## 72" DIA. MANHOLE FLAT LID W/ACCESS OPENING

SIGNATURE OF APPROVAL

DATE RRP DWG

10/01/03

72LIDFC

STRUCTURE