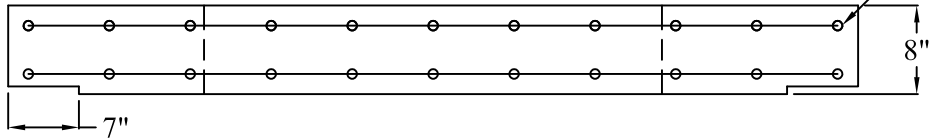


4 X 4/ W4 X W4 WWF.



**SPECIFICATIONS**

MATERIAL AND CONSTRUCTION SHALL COMPLY WITH PENN D.O.T. PUB. 408  
 CLASS AA CONCRETE 4000 P.S.I. @ 28 DAYS  
 REINFORCEMENT~ A.S.T.M. A615 GRADE 60, MIN. 1 1/2" COVER.



**Continental  
 Concrete  
 Products, Inc.**  
 1 South Grosstown Rd.  
 Pottstown, PA 19464  
 Phone: (610) 327-3700  
 Fax: (610) 327-9488

**2' X 6' TO 2' X 4' CONVERSION SLAB**

<b>DATE:</b> 6-00	<b>SIGNATURE OF APPROVAL</b>	<b>DWG NO.</b> CTLST00024	<b>NAME:</b> BTH
----------------------	------------------------------	------------------------------	---------------------