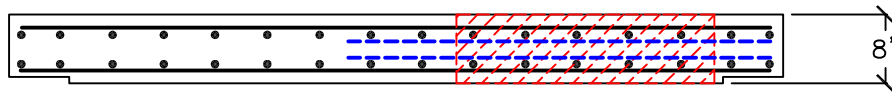


# CONVERSION LID



$\frac{3}{4}$ "x7" DAP ENTIRE PERIMETER OF LID

# SECTION

## SPECIFICATIONS

MATERIAL AND CONSTRUCTION SHALL COMPLY WITH PENN D.O.T. PUB. 408  
 CLASS AA CONCRETE 4000 P.S.I. @ 28 DAYS  
 REINFORCEMENT~ A.S.T.M. A615 GRADE 60, MIN. 1 1/2" COVER.



**Continental  
 Concrete  
 Products, Inc.**  
 1 South Grosstown Rd.  
 Pottstown, PA 19464  
 Phone: (610) 327-3700  
 Fax: (610) 327-9488

## 4x6 TO FRAME & COVER CONVERSION LID

SIGNATURE OF APPROVAL

DATE

RRP

DWG

STRUCTURE

2/24/06

LF/C