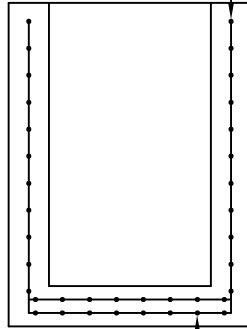
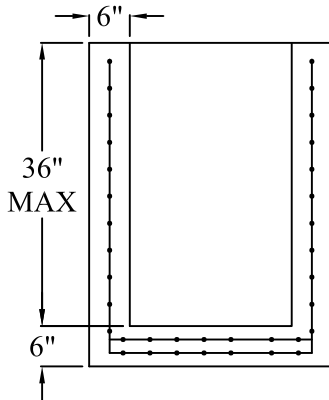
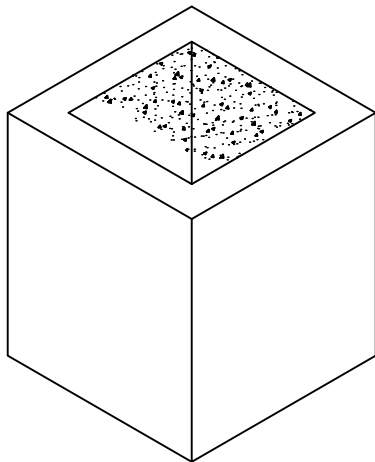
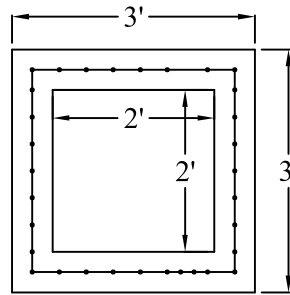


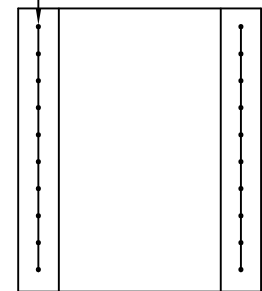
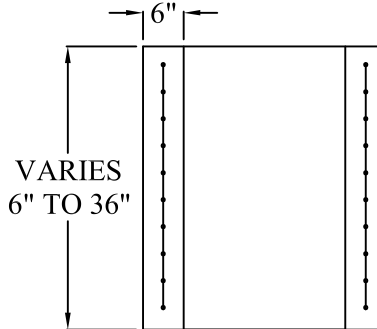
VERTICAL WALL
REINFORCEMENT:
REINFORCED A.S.T.M.
A615 0.12IN²/FT
EACH WAY



BASE SLAB REINFORCEMENT:
TWO LAYERS OF REINFORCING
A.S.T.M A615 0.20IN²/FT.
EACH WAY / EACH LAYER



VERTICAL WALL
REINFORCEMENT:
REINFORCED A.S.T.M.
A615 0.12IN²/FT
EACH WAY



SPECIFICATIONS

MATERIAL AND CONSTRUCTION SHALL COMPLY WITH PENN D.O.T. PUB. 408
CLASS AA CONCRETE 4000 P.S.I. @ 28 DAYS
REINFORCEMENT~ A.S.T.M. A615 GRADE 60, MIN. 1 1/2" COVER.
LOCATION OF PIPE OPENING AS REQUIRED.
BOXES AND RISER FABRICATED IN 6" INCREMENTS
MEETS H-25 LOADING REQUIREMENTS

**Continental
Concrete
Products, Inc.**
1 South Grosstown Rd.
Pottstown, PA 19464
Phone: (610) 327-3700
Fax: (610) 327-9488

STANDARD 2' X 2' INLET BOX & RISER SECTION

DATE: 7-03	SIGNATURE OF APPROVAL	DWG NO. ST09	NAME: BTH
----------------------	------------------------------	------------------------	---------------------