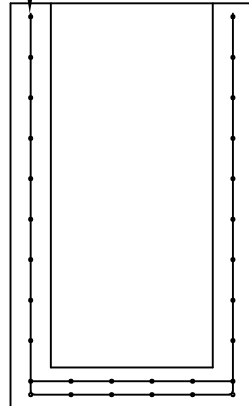
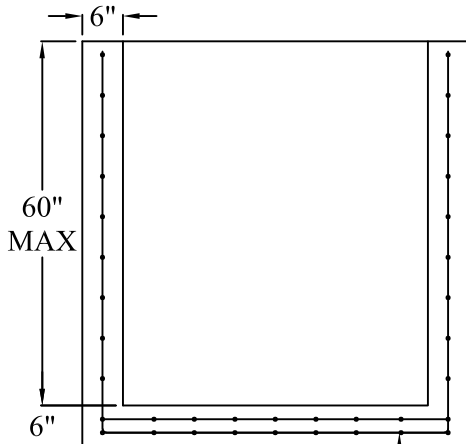
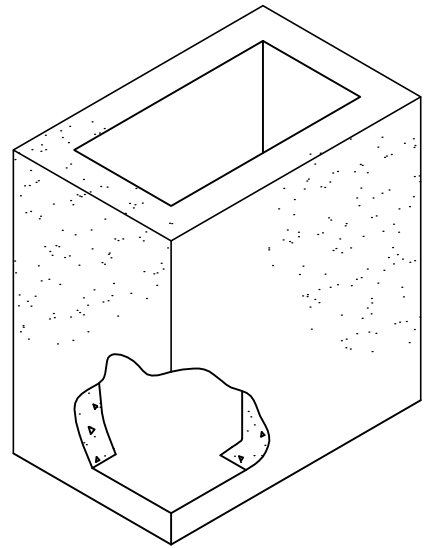
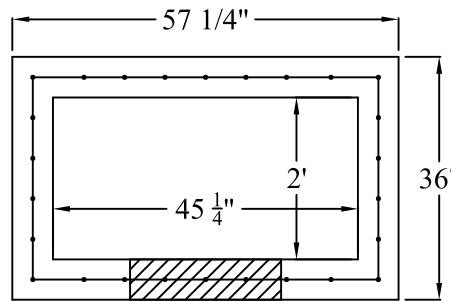


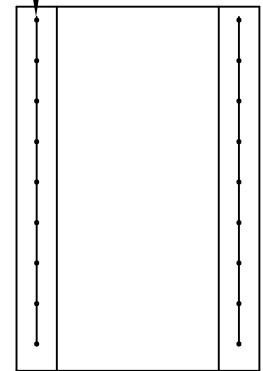
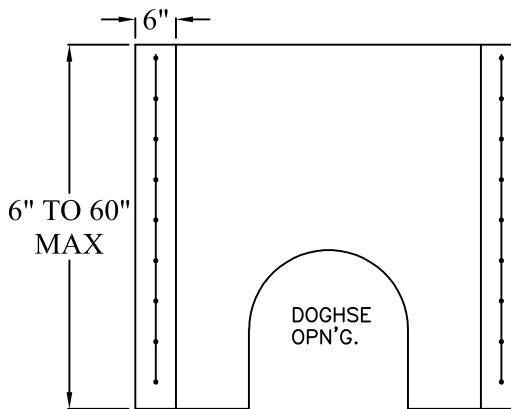
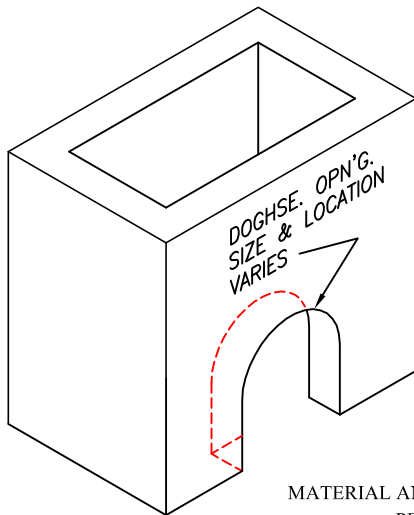
VERTICAL WALL  
REINFORCEMENT:  
REINFORCED A.S.T.M.  
A615 0.12IN<sup>2</sup>/FT  
EACH WAY



BASE SLAB REINFORCEMENT:  
TWO LAYERS OF REINFORCING  
A.S.T.M A615 0.20IN<sup>2</sup>/FT.  
EACH WAY / EACH LAYER



VERTICAL WALL  
REINFORCEMENT:  
REINFORCED A.S.T.M.  
A615 0.12IN<sup>2</sup>/FT  
EACH WAY



**SPECIFICATIONS**

MATERIAL AND CONSTRUCTION SHALL COMPLY WITH PENN D.O.T. PUB 408  
PENNDOT CLASS AA CONCRETE 4000 P.S.I. @ 28 DAYS  
REINFORCEMENT~ A.S.T.M. A 615 GRADE 60, MIN. 1 1/2" COVER.  
LOCATION OF PIPE OPENING AS REQUIRED.  
BOXES AND RISERS FABRICATED IN 6" INCREMENTS  
MEETS H-25 LOAD REQUIREMENTS

**Continental  
Concrete  
Products, Inc.**  
1 South Grosstown Rd.  
Pottstown, PA 19464  
Phone: (610) 327-3700  
Fax: (610) 327-9488

**STANDARD 24" x 45 1/4" INLET BOX & DOGHOUSE RISER  
SECTION**

DATE: 9-05	SIGNATURE OF APPROVAL	DWG NO. 2x4_DOGHSERISER	NAME: BTH
---------------	-----------------------	----------------------------	--------------