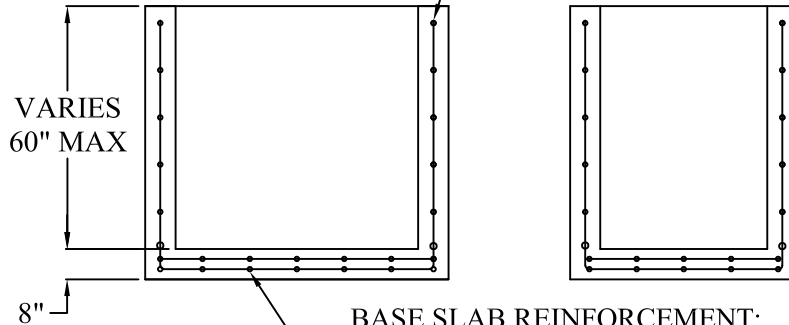
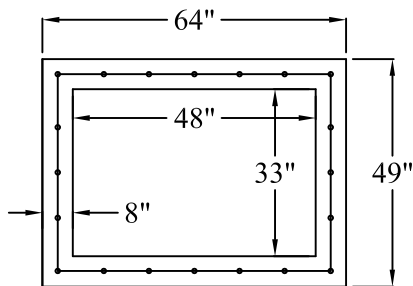


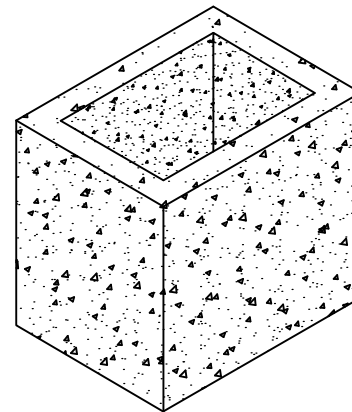
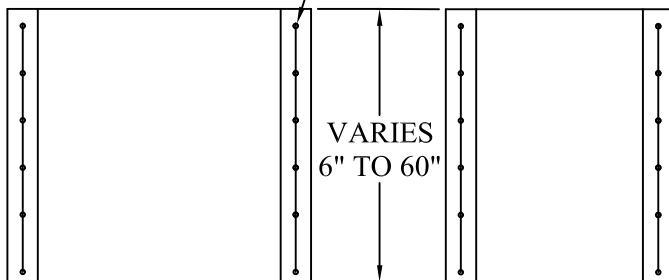
VERTICAL WALL REINFORCEMENT
REINFORCED A.S.T.M.
A615 0.12 IN²/FT EACH WAY



BASE SLAB REINFORCEMENT:
TWO LAYERS OF REINFORCEMENT A.S.T.M.
A615 0.20 IN²/FT EACH WAY; EACH LAYER



VERTICAL WALL REINFORCEMENT
REINFORCED A.S.T.M.
A615 0.12 IN²/FT EACH WAY



SPECIFICATIONS

MATERIAL AND CONSTRUCTION SHALL COMPLY WITH PENN D.O.T. PUB. 408
 CLASS AA CONCRETE 4000 P.S.I. @ 28 DAYS
 REINFORCEMENT~ A.S.T.M. A615 GRADE 60, MIN. 1 1/2" COVER.
 LOCATION OF PIPE OPENING AS REQUIRED.
 BOXES AND RISER FABRICATED IN 6" INCREMENTS

**Continental
Concrete
Products, Inc.**
 1 South Grosstown Rd.
 Pottstown, PA 19464
 Phone: (610) 327-3700
 Fax: (610) 327-9488

33" X 48" X 8" WALL PRECAST INLET BOX & RISER

DATE: 6-00	SIGNATURE OF APPROVAL	DWG NO. CTLST0028	NAME: BTH
---------------	-----------------------	----------------------	--------------