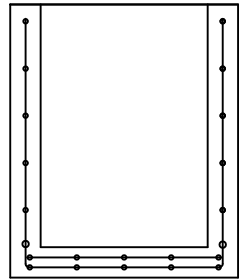
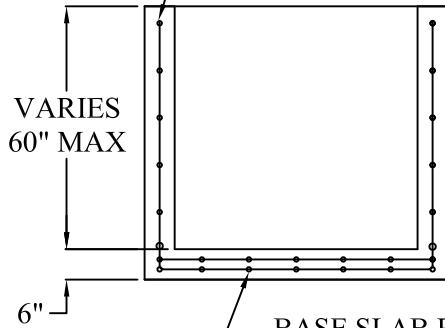
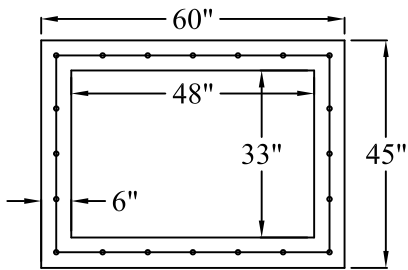


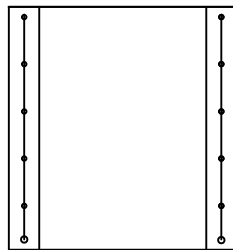
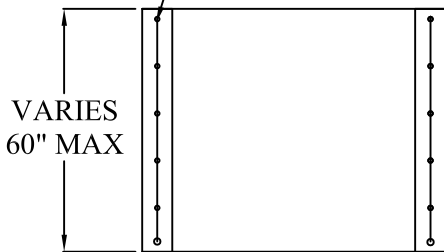
VERTICAL WALL REINFORCEMENT  
REINFORCED A.S.T.M.  
A615 0.12 IN<sup>2</sup>/FT EACH WAY



BASE SLAB REINFORCEMENT:  
TWO LAYERS OF REINFORCEMENT A.S.T.M.  
A615 0.20 IN<sup>2</sup>/FT EACH WAY; EACH LAYER



VERTICAL WALL REINFORCEMENT  
REINFORCED A.S.T.M.  
A615 0.12 IN<sup>2</sup>/FT EACH WAY



**SPECIFICATIONS**

MATERIAL AND CONSTRUCTION SHALL COMPLY WITH PENN D.O.T. PUB. 408  
CLASS AA CONCRETE 4000 P.S.I. @ 28 DAYS  
REINFORCEMENT~ A.S.T.M. A615 GRADE 60, MIN. 1 1/2" COVER.  
LOCATION OF PIPE OPENING AS REQUIRED.  
BOXES AND RISER FABRICATED IN 6" INCREMENTS  
ADDITIONAL REINFORCEMENT TO BE SUPPLIED FOR COMBINED HEIGHTS OF INLET BOX AND RISER OVER 9'-0"



**Continental  
Concrete  
Products, Inc.**  
1 South Grosstown Rd.  
Pottstown, PA 19464  
Phone: (610) 327-3700  
Fax: (610) 327-9488

**33" X 48" PRECAST INLET BOX AND RISER**

DATE: 6-00	SIGNATURE OF APPROVAL	DWG NO. CTLST0028	NAME: BTH
---------------	-----------------------	----------------------	--------------