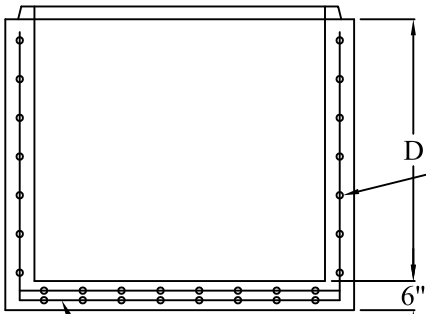
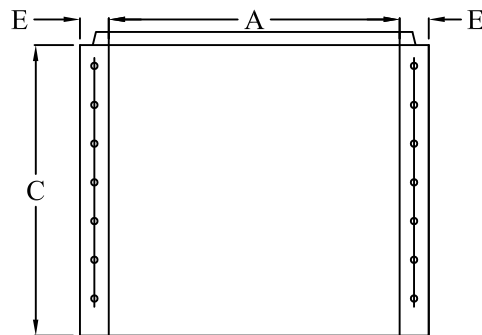
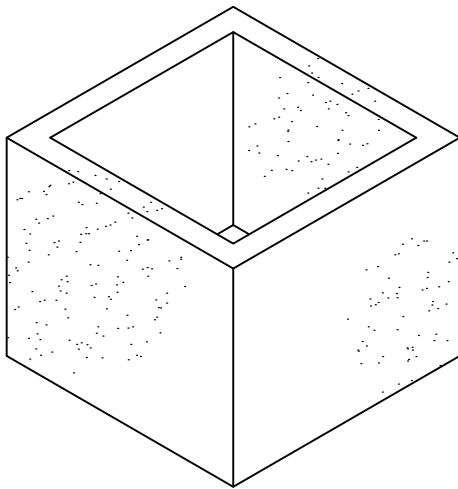
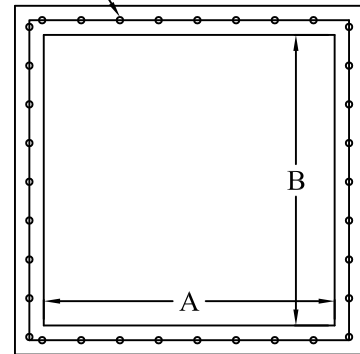


BOX SIZE	(A)	(B)	(C)	(D)	(E)
4'X4' TYPE 1	4' - 0"	4' - 0"	5' - 0"	5' - 0"	6"
5'X5' TYPE 3	5' - 0"	5' - 0"	5' - 0"	5' - 0"	6"
6'X6' TYPE 3	6' - 0"	6' - 0"	8' - 0"	8' - 0"	6"OR8"



(4' X 4' BOX)
MIN 0.12 IN²/FT
EACH WAY
(5' X 5' & 6' X 6')
MIN 0.20 IN²/FT

D6.7 X D6.7WWF 4x4
COMPLIES WITH MIN 0.20
IN²/FT EACH WAY EACH
LAYER



SPECIFICATIONS

MATERIAL AND CONSTRUCTION SHALL COMPLY WITH PENN D.O.T. PUB. 408
 PENN DOT CLASS AA CONCRETE 4000 P.S.I. @ 28 DAYS
 REINFORCEMENT~ A.S.T.M. A615 GRADE 60, MIN. 1 1/2" COVER.
 LOCATION OF PIPE OPENING AS REQUIRED.
 BOXES AND RISER FABRICATED IN 6" INCREMENTS



**Continental
Concrete
Products, Inc.**
 1 South Grosstown Rd.
 Pottstown, PA 19464
 Phone: (610) 327-3700
 Fax: (610) 327-9488

MODIFIED INLET BOX FOR LARGE PIPE

SIGNATURE OF APPROVAL

DATE

DWG

STRUCTURE

8/13/03

LB