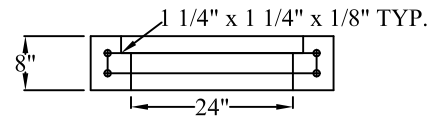


#4 REBAR AS SHOWN

SECTION A-A



SECTION B-B

SPECIFICATIONS

MATERIAL AND CONSTRUCTION SHALL COMPLY WITH PENN D.O.T. PUB. 408
 CLASS AA CONCRETE 4000 P.S.I. @ 28 DAYS
 REINFORCEMENT~ A.S.T.M. A615 GRADE 60, MIN. 1 1/2" COVER.



**Continental
 Concrete
 Products, Inc.**

1 South Grosstown Rd.
 Pottstown, PA 19464
 Phone: (610) 327-3700
 Fax: (610) 327-9488

PENN D.O.T. 6 FT. TYPE M INLET TOP

DATE: 6-00	SIGNATURE OF APPROVAL	DWG NO. CTLST0026	NAME: BTH
---------------	-----------------------	----------------------	--------------