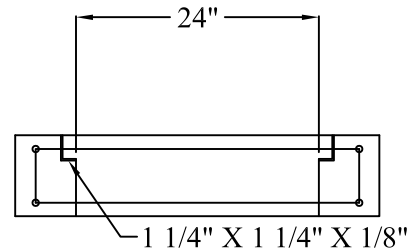


#4 REBAR AS SHOWN 1 1/2" MIN
CONCRETE COVER (TYP.)



SPECIFICATIONS

MATERIAL AND CONSTRUCTION SHALL COMPLY WITH PENN D.O.T. PUB. 408
CLASS AA CONCRETE 4000 P.S.I. @ 28 DAYS
REINFORCEMENT~ A.S.T.M. A615 GRADE 60, MIN. 1 1/2" COVER.
MEETS H-25 LOAD REQUIREMENTS



Continental
Concrete
Products, Inc.
1 South Grosstown Rd.
Pottstown, PA 19464
Phone: (610) 327-3700
Fax: (610) 327-9488

PENN DOT 4FT. TYPE M INLET TOP

DATE:

2-00

SIGNATURE OF APPROVAL

DWG NO.

CTLST0013

NAME:

BTH